



Talon Championship

August 28, 2022

Dragan Field Disc Golf – Auburn ME

Welcome to the Talon Championship. It is a PDGA C-tier event and the first tournament to be played exclusively on the Talon course. Make sure to keep in mind throughout the day that each hole has two tees (blue signs = long, yellow signs = short) and that we will be playing different combinations in each round. Take care that you are playing from the proper tee on each hole.

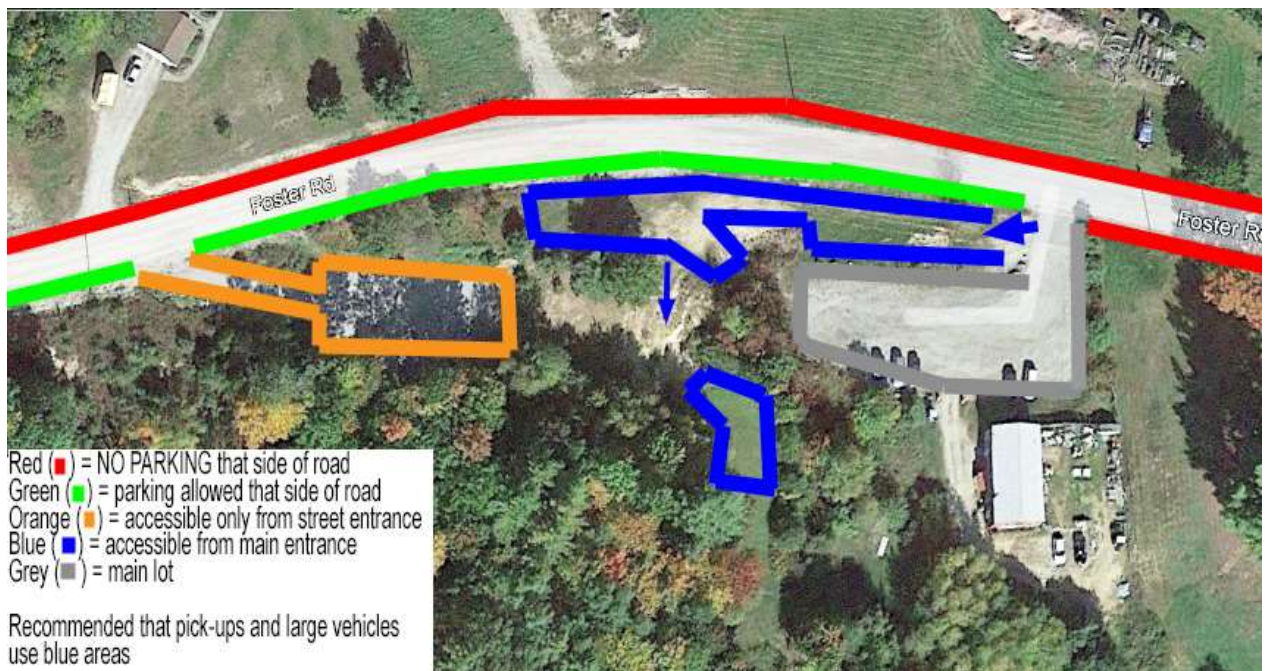
First and foremost, we must acknowledge the sponsors that help make this event happen:

- **RedHawk Disc Golf**
- **Dynamic Discs** (supplier of am player pack discs)
- **Kennedy Disc Golf Adventures**

PARKING

Since Red Dragon will be open to the public, we want to reserve space in the main parking lot for regular customers. To that end, we ask that tournament players fill our secondary parking areas before attempting to park in the main lot. See the map below for those parking areas. The plus side of not using the main lot is that everyone will be closer to the course, especially if in the orange lot or the lower blue area.

If you have to park on the street, please do NOT park across the street from the course. Only park directly along the front of the Dragan Field property (that is from the driveway west down the unpaved portion of the road).



EVENT SCHEDULE

Check In (am player pack pick up)	7:30 – 9:15
Round 1 Start (Long Odds for everyone) <i>(be ready on your assigned hole)</i>	9:30am
Brief Lunch Break <i>(approx. 30 minutes long after last card)</i>	
Round 2 Start (all Longs for Pro & MA1, Short Odds for everyone else)	~1:00pm
Trophy presentations to division winners	~4:30pm

LUNCH

Players will be on their own for lunch between rounds. It is HIGHLY recommended that you bring lunch with you so that you do not have to leave the property. The plan is for a quick turnaround (30 minutes after last card), so don't risk being late to your second round starting hole.

ACE POT

Every competitor is automatically entered into the Dragan Field progressive tournament ace pot for the weekend. Each ace will be paid \$100.

TIEBREAKER

All first place ties at the end of competition will be broken by a sudden death playoff on holes 1 & 18 in a loop, using whichever tees were played by the given division in the second round.

ELECTRONIC SCORING

All scoring will be done online through the PDGA Digital Scorecard. Instructions on how to log in and use the digital scorecard are below. Paper scorecards are available if desired but are not necessary. While all players in the group may keep score simultaneously on the digital scorecard, at least two players in each group must do so. The system will automatically flag discrepancies when they happen, and scores will only be submitted officially once all scorekeepers submit their scorecards. Don't forget to submit as late scorecards will be penalized two throws for the group.

To log in to digital scorecard:

1. Use your preferred browser to go to PDGA.COM/SCORE
2. Enter tournament code: talon22
3. Enter your (scorer) name or PDGA number
4. Press "Keep Score" button for appropriate round
5. Scorecard should be pre-loaded but verify that all players are listed
6. Press "Begin Play" and be sure to begin scoring on the correct hole (should be automatic)

TOURNAMENT RULES REMINDERS

- Shotgun start means everyone starts when *THE TD* signals the start. If the signal does not come at exactly the announced time, do NOT take it upon yourself to shout “start”. The delay may be intentional.
- Possession and/or consumption of alcohol is prohibited during play, defined as the 2 minute warning through submission of the scorecard (Competition Manual section 3.03.B.10). The use of marijuana is not permitted at PDGA events at all, regardless of local law/ordinances (Competition Manual section 3.03.B.8). Violation of either rule will result in immediate disqualification from the tournament.

TALON COURSE RULES/SPECIAL CONDITIONS

Consult the maps on the tee signs for more detail.

All water is casual unless it is within marked OB areas.

Brush piles are considered casual areas. For safety, players are encouraged to take line of play relief behind piles rather than try to play from on/in them. Stacked log walls are considered solid obstacles, *not casual obstacles*. See PDGA rule 803.02.B.

OB areas are marked by yellow stakes unless otherwise noted. The line runs directly from stake to stake as measured from the near fairway edge of the stake. In the case of a disc close to the line, if the group cannot make a distinct call after a quick look from one stake to the next (1-2 seconds), the disc should be ruled *in-bounds*.

Hole 1: Mandatory roughly 50 feet off the long tee. Discs must pass left side of marked tree. The drop zone for missing mandatory is the short tee. OB along the rock wall on the right side of fairway and OB rope on far left side.

Hole 10: OB lines the left side of the fairway (normal OB rules apply). Log bordered “pond” just shy of the basket is a required relief area (806.04). Any throws that land inside this area must be played from the drop zone with *no* penalty. Drop zone is **ONLY** for the relief area. It is not to be used for OB throws.

Hole 11: OB area on the left side of fairway behind the trees

Hole 12: OB area on the left side of fairway and green

Hole 13: OB lines the left side of fairway

Hole 14: OB lines the left side of fairway

Hole 15: Street/road and beyond on left hand side is OB. Road is determined by whether there is gravel under the disc. If group cannot make a quick call (1-2 seconds) on a disc close to the edge, the disc should be ruled in-bounds.

Hole 17: OB along the rock wall on the right and behind the basket

Hole 18: OB on the right side of the fairway

TALON COURSE MAP

