

2022 THORNDIKE MEMORIAL PLAYER PROGRAM / CADDY NOTES

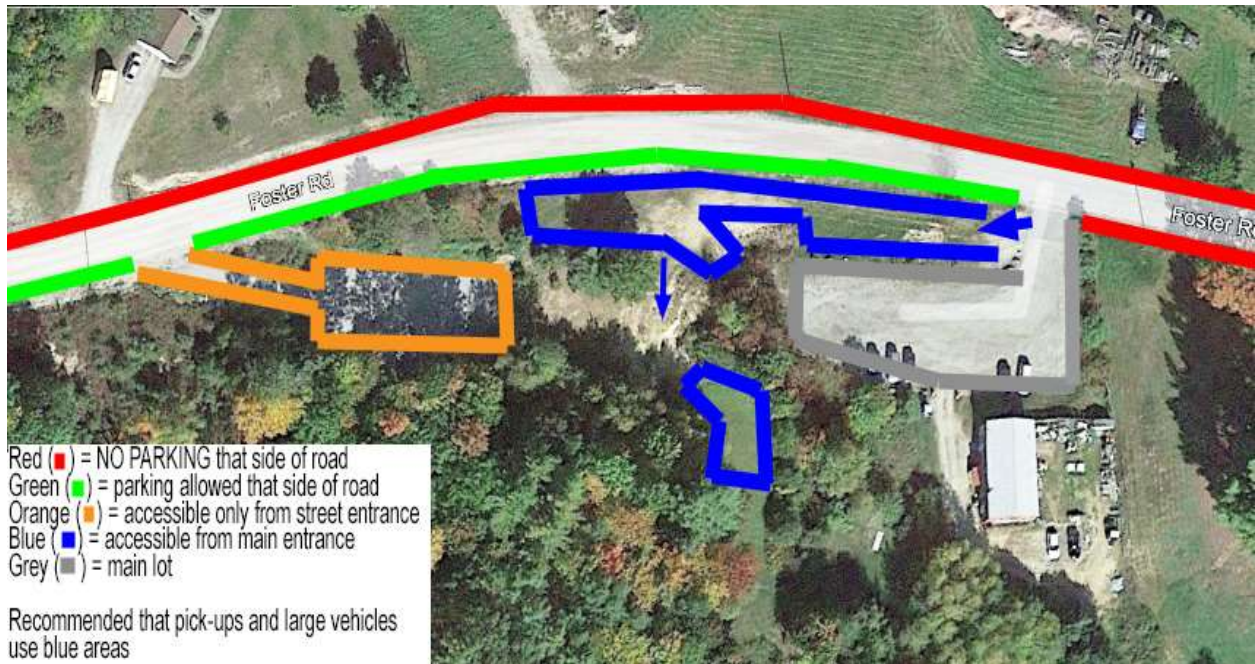
Sunday, November 6, 2022

Welcome to the 19th edition of the Thorndike Memorial! As has been the case since 2011, this will be a PDGA C-tier event played on the Red Dragon course.

PARKING

Since Talon will remain open to the public, we want to reserve space in the main parking lot for regular customers. To that end, we ask that tournament players fill our secondary parking areas before attempting to park in the main lot. See the map below for those parking areas.

If you have to park on the street, please do NOT park across the street from the course. Park only directly along the front of the Dragan Field property (that is from the driveway west down the unpaved portion of the road).



2022 THORNDIKE MEMORIAL PLAYER PROGRAM / CADDY NOTES

Sunday, November 6, 2022

EVENT SCHEDULE

Check In (player pack pick up)	7:00 – 8:45am
Round 1 (be on your assigned hole ready to go)	9:00am
Brief Lunch Break	
Round 2 (starting approx. 30 min. after last card)	~12:30pm
Trophy presentations to division winners	~3:30pm

ACE POT

Every competitor is automatically entered into the Dragan Field progressive tournament ace pot for the weekend. Each ace will be paid \$100.

TIEBREAKER

All first place ties at the end of competition will be broken by a sudden death playoff on Red Dragon holes 17 & 18 in a loop.

TOURNAMENT RULES REMINDERS

- Two Meter Rule is NOT in effect. Play suspended discs per rule 805.01.C.
- Possession and/or consumption of alcohol is prohibited during play, defined as the 2 minute warning through submission of the scorecard (Competition Manual section 3.03.B.10). The use of marijuana is not permitted at PDGA events at all, regardless of local law/ordinances (Competition Manual section 3.03.B.8). Violation of either rule will result in immediate disqualification from the tournament.
- Pace of play is incredibly important due to the early sunset. Given the fall conditions and the abundance of leaves on the ground, please use spotters on any blind shots to help minimize search times for errant discs and to keep play moving.

ELECTRONIC SCORING

All scoring will be done online through the PDGA Digital Scorecard. The PDGA Digital Scorecard allows for multiple players to keep score at the same time. At least two players from each card should log in and keep score simultaneously. Groups may also keep a back-up paper card (available in the pro shop if needed) or on uDisc to further ensure no scoring conflicts. Officially submitting the digital card at the end of the round must be done within 30 minutes of its conclusion or the whole card could be penalized for a late scorecard.

To log in to digital scorecard:

1. Use browser to go to PDGA.COM/SCORE *or* on PDGA Live app, go to scorecard tab
2. Enter tournament code: **THORN22**
3. Enter your (scorer) name or PDGA number
4. Press "Keep Score" button for appropriate round
5. Scorecard should be pre-loaded but verify that all players are listed
6. Press "Begin Play" and be sure to begin scoring on the correct hole (should be automatic)

RED DRAGON COURSE MAP



2022 THORNDIKE MEMORIAL PLAYER PROGRAM / CADDY NOTES
Sunday, November 6, 2022

RED DRAGON COURSE RULES/SPECIAL CONDITIONS

Consult the maps on the tee signs for more detail. All OB lines are marked by yellow rope unless otherwise noted.

Hole 1: OB lines the left side of the fairway and wraps around behind the basket (normal OB rules apply)

Hole 2: OB lines the left and right sides of the fairway as well as behind the basket (normal OB rules apply)

Hole 3: OB lines the perimeter of the entire fairway. The island in the middle of the fairway, marked by paint, is also OB. All throws from the tee that land OB must be played from the drop zone with a one throw penalty. Any throws from the fairway that land OB are played with normal OB rules.

Hole 4: OB lines the left and right sides of the fairway as well as wrapping around behind the basket (normal OB rules apply)

Hole 5: OB area marked by rope and fence on the right hand side (normal OB rules apply)

Hole 6: OB behind the basket (normal OB rules apply)

Hole 7: OB on left side of fairway in the woods (normal OB rules apply)

Hole 8: OB on left side behind the trees (normal OB rules apply)

Hole 9: Mandatory on the right hand side about 300 feet from the tee. Disc must pass the left hand side of the marked tree. Missed mandatory shots must be played from the drop zone with one-throw penalty.

Hole 10: Disc must come to rest past the rope at the top of the cliff to be in-bounds. All throws from the tee that fail to land in-bounds must be re-thrown from the tee with one throw penalty.

Hole 11: OB lines the left side of the fairway and wraps around the perimeter of the green area (normal OB rules apply). All of the three ponds are also OB *if water is present*. Disc must be completely surrounded by water to be OB. All water OBs must be played from the drop zone with one-throw penalty.

Hole 13: OB area long and left of the basket (normal OB rules apply)

Hole 16: OB area on the right side of the fairway near rock wall (normal OB rules apply)

Hole 17: OB lines the right side of the fairway (normal OB rules apply)

Hole 18: OB lines the perimeter of the entire fairway. The island marked by rope and paint in the middle of the fairway is OB. It is one big island, the path through it is also OB (normal OB rules apply)